

Chapter 4: Reading and  
Interpreting the State Data Profile

Safety Profile, Permanency  
Profile, and Composite Measures

## Five Sections of Data Profile

- Child Safety Profile
  - 2 Safety Indicators
- Point-in-time Permanency Profile
- Permanency Profile, First-time Cohort
- CFSR Round 1 Permanency Profile
- CFSR Round 2 Permanency Profile
  - 4 Permanency Composites

### **Five Sections of Data Profile**

There are five sections in the State Data Profiles, many of which are used for the CFS Reviews. These sections consist of the Child Safety Profile, the Point-in-Time Permanency Profile, the Permanency Profile of a First-time Entry Cohort, CFSR Round 1 Measures, and CFSR Round 2 - Permanency Composites 1-4. As this summary suggests, all data profiles generated in conjunction with the first round of CFSR have been retained and that these measures have been supplemented with a data profile summarizing the Permanency Outcomes adopted in the second round.

In the Child Safety Profile, two Safety Indicators from NCANDS data are provided. AFCARS data are used to compute entries for the remaining data profiles, including the four Permanency Composites generated for the second round of CFSR.

## Reporting Timeframes

- Three years are presented for purposes of providing context to data.
- For most measures, only the most current year is used to determine substantial conformity during the period of review.

### **Reporting Timeframes**

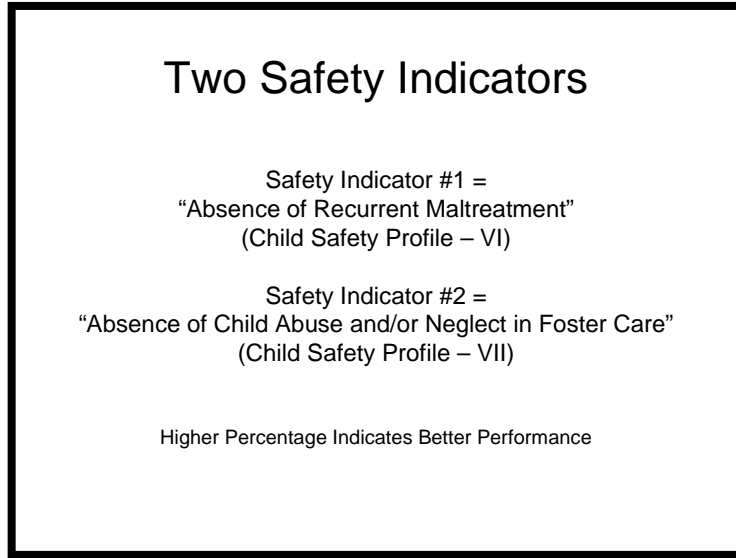
Three years of data are presented in the State Data Profiles for purposes of providing context to the data. The spread of three years allows the States to identify how changes in policy or practice over time affect outcomes for children. For most measures, only data from the most current year is used to determine substantial conformity during the period of review.

### How Is the Child Safety Profile Developed?

- Profile uses NCANDS Data 2003-2005
- 2004 data used to determine national standards
- Two safety indicators computed

#### **How is the Child Safety Profile Developed?**

Data from 2003-2005 comprise the 2005 Safety Profile. Data from 2004 were used to determine the national standards. Counts of reports, duplicate and unique children are derived from the NCANDS Child File. Two Safety Indicators for the CFSR – maltreatment recurrence and maltreatment in foster care - are presented in the Safety Profile.



### **Two Safety Indicators**

The first Safety Indicator, “Absence of Maltreatment Recurrence” is located in the Child Safety Profile Section VI. For this measure, like all outcomes associated with CFSR Round 2, a higher percentage indicates better performance

The second Safety Indicator “Absence of Child Abuse and/or Neglect in Foster Care” is located in Child Safety Profile Section VII. A higher percentage in this indicator means better performance because it means proportionately more children were kept free of abuse and neglect in the care of the State.

In considering the two Safety Indicators, it is important to note how they are derived:

- Safety Indicator #1 is derived from NCANDS DCDC data; and
- Safety Indicator #2 is derived from NCANDS DCDC data and AFCARS Foster Care data.

**Important Note**

It is important to note that the intent of this next section is to build upon our discussion with the origins of the AFCARS and NCANDS databases. By reviewing each of the sections in the State Data Profiles, participants will be able to identify the components of each, and explain how and why the databases are used in the CFS Reviews. For each cell of the State Data Profile presented in the following tables, the letters refer to a definition and explanation in the Quick Reference Guide to the Data Elements.

### I. Total CA/N Reports Disposed

|  |                    |   |                              |   |                           |   |
|--|--------------------|---|------------------------------|---|---------------------------|---|
| I. CHILD SAFETY<br>PROFILE<br><i>State X</i>   | Calendar Year 2005 |   |                              |   |                           |   |
|  | Reports            | % | Duplic.<br>Chn. <sup>2</sup> | % | Uniq<br>Chn. <sup>2</sup> | % |
| I. Total CA/N<br>Reports Disposed <sup>1</sup> | A                  |   | B                            |   | C                         |   |

Note: Here and following sections, each cell type is explained in the "Guide to the CFSR Data Profile Elements."

**Total CA/N Reports Disposed**

This slide illustrates the data element, "Total CA/N Reports Disposed." It is based on the reports made in the State that received a disposition in the reporting period under review. The number shown may include reports received during a previous year that received a disposition in the reporting year. Counts based on "reports," "duplicated counts of children," and "unique counts of children" are provided.

The duplicated count of children (report child pairs) counts a child each time that he/she was reported and received a disposition. The unique count of children counts a child only once during the reporting period, regardless of how many times the child was reported. In cases where the percentages of reports, duplicate children, or unique children counts are necessary, an explanation is provided.

## II. Disposition of CA/N Reports

| I. CHILD SAFETY<br>PROFILE<br>State X           | Calendar Year 2005 |   |                            |   |                            |   |
|---|--------------------|---|----------------------------|---|----------------------------|---|
|   | Reports            | % | Dupl.<br>Chn. <sup>2</sup> | % | Uniq.<br>Chn. <sup>2</sup> | % |
| II. Disposition of<br>CA/N Reports <sup>3</sup> |                    |   |                            |   |                            |   |
| Substantiated &<br>Indicated                    | D                  | E | F                          | G | H                          | I |
| Unsubstantiated                                 | J                  | K | L                          | M | N                          | O |
| Other   | P                  | Q | R                          | S | T                          | U |

### Disposition of CA/N Reports

The data element, “Disposition of CA/N Reports,” is based on the highest disposition of any child who was the subject of an investigation or assessment in a particular report. The types of disposition include substantiated and indicated, unsubstantiated, and other. In the “Disposition of CA/N Reports,” state-to-state variation may be due to different criteria or levels for substantiation. Variation may also occur over time due to policy changes.

The child counts sections are based on individual dispositions. For example, if alleged maltreatment was investigated for two children, and the State counts the investigation as one report, and one child is found to be neglected and the other child found not to be maltreated, the report disposition will be substantiated. The disposition for each child is based on the specific finding related to the maltreatment. In other words, of the two children above, one is a victim and is counted under “substantiated,” and the other is not a victim and is counted under “unsubstantiated.”

In determining the unique counts of children, the highest finding is given priority. If a child is found to be a victim in one report, but not a victim in a second report, the unique count of children includes the child only as a victim.

Please note a child is counted as a victim if an alleged maltreatment was either substantiated or indicated. In a number of States, “indicated” is used if a child is at risk of maltreatment. With the agreement of the States, NCANDS has included these children as “victims of maltreatment.” The category of “other” includes children whose report may have been “closed without a finding,” children for whom the allegation disposition is “unknown,” and other dispositions that a State is unable to code as substantiated, indicated, or unsubstantiated.

**III. Child Cases Opened For Services**

| <b>I. CHILD SAFETY PROFILE</b><br><i>State X</i>        | <b>Calendar Year 2005</b> |   |                           |   |                         |   |
|---|---------------------------|---|---------------------------|---|-------------------------|---|
|   | Reports                   | % | Duplic. Chn. <sup>2</sup> | % | Uniq. Chn. <sup>2</sup> | % |
| <b>III. Child Cases Opened for Services<sup>4</sup></b> |                           |   | V                         | W | X                       | Y |

**Child Cases Opened for Services**

The data element, “Child Cases Opened for Services,” is based on the number of children with a substantiated or an indicated finding of maltreatment during the reporting period under review or who was identified as an ‘Alternative Response’ maltreatment victim. The NCANDS Child File does collect service data for non-victims, but these counts are not provided in the Safety Profile. “Opened for services” refers to post-investigative services. The duplicated number includes multiple entries for children who were identified as victims in multiple reports (denominator) while a designation of “Open for Services” (numerator) is applied only for those specific reports that were linked to ongoing post-investigation services. The unique number counts a child maltreatment victim only once regardless of the number of reports.

The Child Safety Data Profile reports the number and percentage of maltreatment victims - for both unique and duplicate counts as outlined above - who were subsequently linked to ongoing services in conjunction with the respective report..

| IV. Children Entering Care Based on CA/N Report              |                    |   |                           |    |                        |    |
|--|--------------------|---|---------------------------|----|------------------------|----|
| I. CHILD SAFETY PROFILE<br><i>State X</i>                    | Calendar Year 2005 |   |                           |    |                        |    |
|  | Reports            | % | Duplic. Chn. <sup>2</sup> | %  | Uniq Chn. <sup>2</sup> | %  |
| IV. Children Entering Care Based on CA/N Report <sup>5</sup> |                    |   | Z                         | AA | BB                     | CC |

**Children Entering Care Based on CA/N Report**

The data element, “Children Entering Care Based on CA/N Report,” is based on substantiated and indicated reports disposed during the reporting period under review. The duplicated number includes multiple entries for children who were identified as victims in multiple reports (denominator) while a designation of “Entering Care Based on CA/N Report” (numerator) is applied only for those specific reports where foster care services were provided. The unique number counts a child maltreatment victim only once regardless of the number of reports.

The Child Safety Data Profile reports the number and percentage of maltreatment victims - for both unique and duplicate counts as outlined above - who were linked to foster care services in conjunction with the maltreatment report.

| V. Child Fatalities                       |                    |   |                           |   |                         |    |
|---|--------------------|---|---------------------------|---|-------------------------|----|
| I. CHILD SAFETY PROFILE<br><i>State X</i> | Calendar Year 2005 |   |                           |   |                         |    |
|   | Reports            | % | Duplic. Chn. <sup>2</sup> | % | Uniq. Chn. <sup>2</sup> | %  |
| V. Child Fatalities <sup>6</sup>          |                    |   |                           |   | DD                      | EE |

**Child Fatalities**

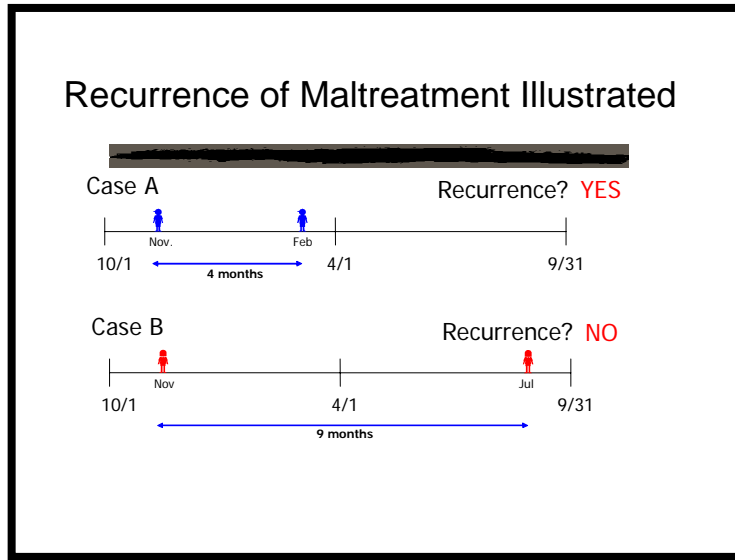
The data element, “Child Fatalities,” calculates the number of children reported in the NCANDS Child File as having died as a result of child abuse and/or neglect. Depending upon State practice, this number may count only those children for whom a case record has been opened either prior to or after the death, or may include a number of children whose deaths have been investigated as possibly related to child maltreatment. For example, some States include neglected-related deaths such as those caused by motor vehicle or boating accidents, house fires or access to firearms, under certain circumstances. The percentage is based on a count of unique maltreatment victims for the reporting period.

|   |                           |   |                           |   |                        |    |
|---|---------------------------|---|---------------------------|---|------------------------|----|
| <b>VI. Absence of Maltreatment Recurrence</b>             |                           |   |                           |   |                        |    |
| <b>I. CHILD SAFETY PROFILE</b><br><i>State X</i>          | <b>Calendar Year 2005</b> |   |                           |   |                        |    |
|   | Reports                   | % | Duplic. Chn. <sup>2</sup> | % | Uniq Chn. <sup>2</sup> | %  |
| <b>VI. Absence of Maltreatment Recurrence<sup>7</sup></b> |                           |   |                           |   | FF                     | GG |

**Absence of Maltreatment Recurrence**

The data element, “Absence of Recurrence of Maltreatment,” is defined as follows: Of all children who were victims of substantiated or indicated child abuse and/or neglect during the first six months of the reporting period, what percentage did not have another substantiated or indicated report within a 6-month period (calculated on the basis of 183 days). The number of maltreatment victims and the percentage of these children with no maltreatment recurring within 6 months are provided. This data element is used to determine, in part, the State’s substantial conformity with Safety Outcome #1.

Absence of maltreatment recurrence for unique children is reported as a percentage and reflects the percentage of unique substantiated or indicated victims during the first six months of the reporting period who were not recurrent victims within 6 months (183 days) of the initial report.

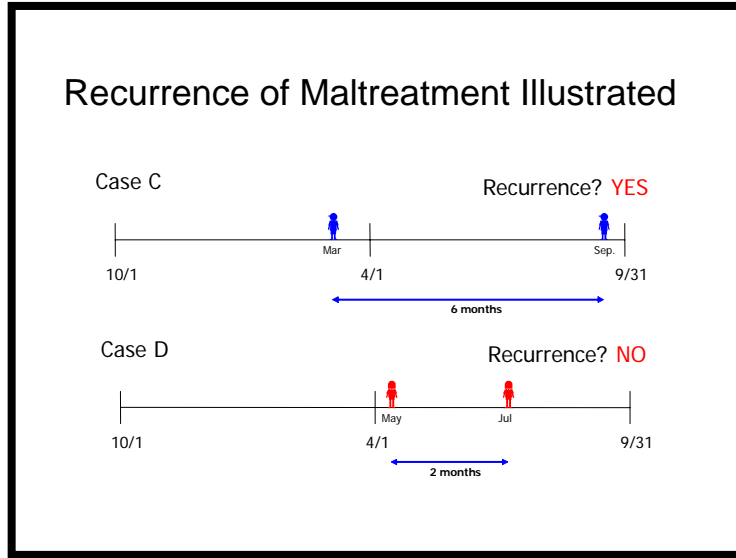


### **Recurrence of Maltreatment Illustrated**

Now that we have the technical definition of the recurrence of maltreatment, let's look at some examples that illustrate how the recurrence of maltreatment measure is developed. Both Case A and Case B refer to the illustration on the slide below.

**Case A:** It is considered recurrence since the first episode took place in November (within the first 6 months of the Federal fiscal year) and the second episode took place only 4 months later.

**Case B:** It is not considered a recurrence. Like Case A, the first episode took place in November. However, the second episode took place in July of the following calendar year, more than 6 months after the first episode.



### **Recurrence of Maltreatment Illustrated**

**Case C:** This is considered a recurrence. The first episode took place in March (within the first 6 months of the Federal fiscal year) and the second episode took place in September, within 6 months of the first episode.

**Case D:** This is not counted in the recurrence measure. Even though the two episodes took place within 2 months of each other, the first episode did not take place within the first 6 months of the Federal fiscal year.

VII. Absence of CA/N in Foster Care

| I. CHILD SAFETY PROFILE<br><i>State X</i>                              | Calendar Year 2005 |   |                           |   |                        |    |
|--|--------------------|---|---------------------------|---|------------------------|----|
|  | Reports            | % | Duplic. Chn. <sup>2</sup> | % | Uniq Chn. <sup>2</sup> | %  |
| VII. Absence of Child Abuse and/or Neglect in Foster Care <sup>8</sup> |                    |   |                           |   | HH                     | II |

**Absence of CA/N Foster Care**

The data element, “Absence of Child Abuse and/or Neglect in Foster Care,” is defined as follows: Of all children who were served in foster care during the reporting period, what percentage were not the subject of substantiated or indicated maltreatment by a foster parent or facility staff? The number of children not maltreated in foster care and the percentage of all children are provided. This data element is used to determine, in part, the State’s substantial conformity with Safety Outcome #1.

### What Data Are Used to Develop the Permanency Profile

- AFCARS Data 2003-2005
- Includes case level records
- A & B reporting periods added and de-duplicated to create Annual File (plus relevant cases from next A File)
- Round 1 CFSR Permanency Indicators (also point-in-time data) reported separately

#### **What Data Are Used to Develop the Permanency Profile?**

The Point-in-Time Permanency Profile is derived from a State's 2003-2005 AFCARS data. The case level data are taken from the AFCARS Foster Care Database. The four Permanency Indicators associated with Round 1 of the CFSR are also derived from AFCARS point-in-time data and are reported separately. The data files used to populate the Permanency Profile are annual files obtained by combining and removing duplicates from each State's two submissions for the year [e.g., 2004 file is composed of 2004A (10/1 – 3/31) and 2004B (4/1 – 9/30) records, along with records from 2005A (10/1 – 3/31) with appropriate dates], including any new data from resubmissions.

Perm Profile – different parts – point in time, etc.

### How is the Permanency Profile Developed

- Point-in-time data derived from annual data (as of end of federal fiscal year)
- First-time entry cohort data derived from children entering care for the first time in their lives in the first 6-months of federal fiscal year (10/1 to 3/31)

#### **How is the Permanency Profile Developed?**

The Permanency Profile is determined by looking at both Point-in-Time and First-Time-Entry cohort data. Point-in-Time data is derived from annual data (at of end of Federal fiscal year). First-Time-Entry cohort measures are derived for children entering care for the first time in their lives during the first 6 months of the Federal fiscal year (10/1 to 3/31).

## Common Terminology

- *Point-in-time*: Refers to a group of children on a specific date (9/30 for AFCARS)
- *First-time entry cohort*: Refers to a group of children who entered out-of-home care for the first time in their lives during a designated time period.
- *Median*: Represents the value of the midpoint among the total number of cases (i.e., half the cases are higher, half the cases are lower).
  - Unlike averages, the median is less affected by extreme high and low values.

### Common Terminology

*Point-in-Time*: Refers to a group of children on a specific date, in this case children in the AFCARS file on 9/30 for the reporting.

*First-time entry cohort*: Refers to a group of children who entered out-of-home care for the first time in their lives during a designated time period, in this case the period is the first six-months of a given AFCARS reporting period year.

*Median*: Represents the value of the midpoint among the total number of cases (i.e., half the cases are higher, half the cases are lower). Unlike averages, the median is less affected by extreme high or low values.

- Example of median vs. average
  - Data set includes: 3,4,7,9,10,12,15,25,27
  - The median is 10.
    - 3,4,7,9 are lower
    - 12,15,25,27 are higher
  - The average is 12.44

## Round 1 Permanency Indicators

- All CFSR Round 1 Permanency Indicators were reported in separate Point-In-Time Data Profile
  - Indicator #1: Reunification in less than 12 months (Profile Entry IX)
  - Indicator #2: Adoption in less than 24 months (Profile Entry X)
  - Indicator #3: No more than 2 placements in 12 months (Profile Entry XI)
  - Indicator #4: Reentry into foster care in 12 months (Profile Entry XII)

### **Round 1 Permanency Indicators**

For the first round of the CFSR, the Permanency Profile included computations for permanency measures such as reunification from and re-entry into foster care. Although these measures have been replaced with a broader set of permanency measures for CFSR Round 2, they are still included in a separate point-in-time data profile to permit States the ability to assess their relative performance with respect to the different sets of measures. In summary, the four Permanency Indicators from the first round of CFSR included the point-in-time data profile entries for IX) Reunification in less than 12 months; X) Adoption in less than 24 months; XI) Children with no more than 2 placements; and XII) Reentry into foster care in less than 12 months.

## Overview of Permanency Indicator 1

- Round 1 Permanency Indicator 1 (Reunification in 12 months)
  - Data profile presents computation of count/percent of children reunified with family/relative in < 12 months
- Round 2 introduces following change in computation:
  - Excludes children in care < 8 days
- Round 2 introduces following reunification measures:
  - Percent new entries reunified in 12 months
  - Median length of time in care before discharge

### **Overview of Permanency Indicator 1**

Permanency Indicator #1, “Reunification in less than 12 months,” is located in the Point-in-Time Permanency Profile, Section IX. The indicator is the number of children discharged from foster care during the Federal fiscal year that were either returned to the parents or relatives less than 12 months of entering care. A higher percentage for these data indicates better performance by the State in moving children to permanency. In brief, a higher percentage of reunification in less than 12 months indicates that more children are being reunified with their family within a reasonable timeframe.

Basic changes to this measure introduced in CFSR Round 2 include 1) adjustments to computed time in care if child was on a trial home visit immediately prior to discharge; and 2) the exclusion of children in care for less than 8 days from the computation.

In addition to the above changes, CFSR round 2 also introduces additional reunification measures. This includes the addition of computations for median length of time in care for children discharged from care and also a new summary for reunification of children entering care during the first 6 months of the reporting period.

## Overview of Permanency Indicator 2

- Round 1 Permanency Indicator 2: Adoption in 24 months
- Data profile presents computation of count/percent of children discharged to adoption who were adopted within 24 months of foster care entry
- No changes in computation for Round 2
- Round 2 introduces several measures on adoption, including median time in care for adopted children

### **Overview of Permanency Indicator 2**

Permanency Indicator #2, “Adoption in less than 24 months” is located in the Point-in-Time Permanency Profile, Section X. The indicator is the number of children discharged from foster care during the Federal fiscal year that exited care to a finalized adoption within 24 months of removal. A higher percentage indicates better performance by the State in moving children to permanency. A higher percentage indicates that more children are being adopted within a reasonable timeframe.

Although no changes to this basic formulation are introduced in CFSR Round 2, a broad base of new computations addressing adoptions has been introduced. Among these, the most closely related measure is a computation for the timeliness of adoptions based upon median length of time in care.

### Overview of Permanency Indicator 3

- Round 1 Permanency Indicator 3: Children with no more than 2 placement settings
- Data profile presents computations of count/percentage of children in care < 12 months with no more than 2 placement settings
- Changes in computation for Round 2 includes exclusion of children in care < 8 days
- Round 2 introduces 2 additional measures on placement stability:
  - Children in care 12-24 months with no more than 2 placement settings
  - Children in care > 24 months with no more than 2 placement settings

### **Overview of Permanency Indicator 3**

Permanency Indicator #3, “No more than two placements,” is located in the Point-in-Time Permanency Profile, Section XI. The indicator is the number of children who have been in foster care less than 12 months from date of latest removal from home that have had no more than two placement settings. A higher percentage indicates better performance by the State in moving children to permanency. A higher percentage indicates that more children have been able to have stable living environments.

The only change introduced in this computation for CFSR Round 2 is that children who have been in foster care for less than 8 days are excluded from the computation.

In addition to this change, CFSR round 2 also introduces a broader range of measures associated with placement stability. The new measures add comparable computations for children in care between 12 and 24 months and for children in care for more than 24 months.

### Overview of Permanency Indicator 4

- Round 1 Permanency Indicator 4: Reentry into Foster Care in 12 Months
- Data profile presents computation of count/percent of children entering care who were reentering care within 12 months
- Revisions for CFSR Round 2 address reentry by tracking a cohort of children discharged to reunification within the previous year. Reentry is counted if child reenters care within 12 months.
- CFSR revisions contain no additional measures addressing foster care reentry.

### **Overview of Permanency Indicator 4**

Permanency Indicator #4, “Re-entry into foster care in less than 12 months,” is located in the Point-in-Time Permanency Profile, Section XII. The indicator is the number of children who re-entered foster care during the Federal fiscal year within 12 months of a prior foster care episode. In this Permanency Indicator a lower percentage indicates better performance by the State. A lower percentage indicates that children are spending more time in permanent, stable homes rather than re-entering foster care.

Changes for this measure under CFSR Round 2 is that computations will be based upon the cohort of children discharged to reunification during the previous reporting period rather than a point-in-time assessment of children who entered foster care. A reentry is counted if any child in this cohort reenters care within 12 months. No other measures associated with foster care reentry have been introduced into the latest revisions for the CFSR.

| I. Foster Care Population Flow                               |                  |                  |
|--|------------------|------------------|
| II. POINT-IN-TIME<br>PERMANENCY<br>PROFILE<br><i>State X</i> | Federal FY 2005  |                  |
|  | # of<br>Children | % of<br>Children |
| I. Foster Care Population<br>Flow                            |                  |                  |
| Children in foster care on first day of year                 | (1)              |                  |
| Admissions during year                                       | (2)              |                  |
| Discharges during year                                       | (3)              |                  |
| Children in care on last day of year                         | (4)              |                  |
| Net change during year (% = net change/served)               | (5)              |                  |

### **Foster Care Population Flow**

The data element, “Foster Care Population Flow,” assesses the status of children as reported on the last day of the Federal fiscal year. The data elements in the foster care population flow category are: (1) children in foster care on the first day of the year; (2) admissions during the year; (3) discharges during the year; (4) children in care on the last day of year; and, (5) net change during the year. (Note—net change may be positive or negative.)

The percentage that was reported in the Round 1 Data Profile in the “Foster Care Population Flow” section was the percent of net change in the Federal fiscal year. The percentage of net change during the year for children served was derived by dividing the number of net change by the sum of the number of children in foster care on the first day of the year and the number of admissions during the year. However, this number is no longer reported in the State Data Profile.

## II. Placement Types for Children in Care

| II. POINT-IN-TIME PERMANENCY PROFILE<br><i>State X</i> | Federal FY 2005 |               |
|--|-----------------|---------------|
|  | # of Children   | % of Children |
| <b>II. Placement Types for Children in Care</b>        |                 |               |
| Pre-Adoptive Homes                                     | (7)             | (8)           |
| Foster Family Homes (Relative)                         | (9)             | (10)          |
| Foster Family Homes (Non-Relative)                     | (11)            | (12)          |
| Group Homes  | (13)            | (14)          |
| Institutions   | (15)            | (16)          |
| Supervised Independent Living                          | (17)            | (18)          |
| Runaway  | (19)            | (20)          |
| Trial Home Visit                                       | (21)            | (22)          |
| Missing Placement Information                          | (23)            | (24)          |
| Not Applicable (Placement in subsequent year)          | (25)            | (26)          |

### Placement Types for Children in Care

The data element, “Placement types for children in care,” is the number of children in specific placement types on the last day of the Federal fiscal year. The types of placement categories include:

- Pre-adoptive homes
- Foster Family Homes (Relative)
- Foster Family Homes (Non-Relative)
- Group Homes
- Institutions
- Supervised Independent Living
- Runaway
- Trial Home Visit
- Missing Placement Information
- Not Applicable (Placement in subsequent year).

Percentages are calculated for each placement type. Percentages for each category are derived by dividing the number of children in each placement category by the number of children in care on the last day of the year.

### III. Permanency Goals for Children In Care

| II. POINT-IN-TIME<br>PERMANENCY PROFILE<br><i>State X</i> | Federal FY 2005  |                  |
|---|------------------|------------------|
|   | # of<br>Children | % of<br>Children |
| III. Permanency Goals for<br>Children in Care             |                  |                  |
| Reunification   | (27)             | (28)             |
| Live with Other Relatives                                 | (29)             | (30)             |
| Adoption  | (31)             | (32)             |
| Long-Term Foster Care                                     | (33)             | (34)             |
| Emancipation  | (35)             | (36)             |
| Guardianship  | (37)             | (38)             |
| Case Plan Goal Not Established                            | (39)             | (40)             |
| Missing Goal Information                                  | (41)             | (42)             |

### Permanency Goals for Children in Care

The data element, “Permanency goals for children in care,” is the count of permanency goal types for children in care on the last day of the Federal fiscal year. There are eight types of permanency goals, which include:

- Reunification
- Adoption
- Long-term foster care
- Emancipation
- Guardianship
- Case plan goal not established
- Missing goal information.

Percentages are calculated for each placement type category. Percentages are derived by dividing the number of children in each category by the number of children in care on the last day of the year.

| IV. Number of Placement Settings<br>in Current Placement Episode |                  |                  |
|--|------------------|------------------|
| II. POINT-IN-TIME<br>PERMANENCY PROFILE<br><i>State X</i>        | Federal FY 2005  |                  |
|  | # of<br>Children | % of<br>Children |
| IV. Number of Placement<br>Settings in Current Placement         |                  |                  |
| One  | (43)             | (44)             |
| Two  | (45)             | (46)             |
| Three  | (47)             | (48)             |
| Four   | (49)             | (50)             |
| Five   | (51)             | (52)             |
| Six or more  | (53)             | (54)             |
| Missing placement settings                                       | (55)             | (56)             |

### **Number of Placement Settings in Current Placement Episode**

The data element, “Number of placement settings in current placement,” is found in Section IV of the Point-in-Time Permanency Profile. The number reflects the number of placement settings that the child has been in during the current removal episode (i.e., since the latest removal from home or most recent placement with the State).

Percentages are derived by dividing the number of children in each subcategory by the number of children in care on the last day of the year.

## V. Number of Removal Episodes

| II. POINT-IN-TIME<br>PERMANENCY PROFILE<br><i>State X</i> | Federal FY 2005  |                  |
|---|------------------|------------------|
|   | # of<br>Children | % of<br>Children |
| <b>V. Number of Removal Episodes</b>                      |                  |                  |
| One   | (57)             | (58)             |
| Two   | (59)             | (60)             |
| Three   | (61)             | (62)             |
| Four  | (63)             | (64)             |
| Five  | (65)             | (66)             |
| Six or more   | (67)             | (68)             |
| Missing removal episodes                                  | (69)             | (70)             |

**Number of Removal Episodes**

The data element, “Number of removal episodes,” is the number of removal episodes or the number of times a child has been removed from a home over the course of his/her life.

Percentages are reported for this category. Percentages are derived by dividing the number of children in each group by the number of children in care on the last day of the year.

**VI. Number of Children in Care  
17 of the Most Recent 22 Months**

| II. POINT-IN-TIME PERMANENCY<br>PROFILE<br><i>State X</i>  | Federal FY 2005  |                  |
|--|------------------|------------------|
|  | # of<br>Children | % of<br>Children |
| <b>VI. Number of children in care 17<br/>of the most recent 22 months<sup>2</sup></b><br>(percent is based on cases with<br>sufficient information for<br>computation) | (71)             | (72)             |

### **Number of Children in Care 17 of the Most Recent 22 Months**

The indicator is designated as, “17 of the most recent 22 months,” rather than the AFSA statutory time frame for initiating termination of parental rights proceedings at *15 of the most recent 22 months*, since the AFCARS system cannot determine *the date the child is considered to have entered foster care* as defined in the regulation. The outside date is used for determining *the date the child is considered to have entered foster care*, which is 60 days from the actual removal date.

The percentage of children that have achieved permanency in the statutory timeframe within the general foster care population is reported. The percentage is based on cases with sufficient information to accurately compute the length of FC stays within the last 22 months.

## VII. Median Length of Stay in Foster Care

| II. POINT-IN-TIME<br>PERMANENCY PROFILE<br><i>State X</i>                                  | Federal FY 2005     |
|--|---------------------|
|  | Number of<br>Months |
| VII. Median Length of Stay in<br>Foster Care<br>(of children in care on last day of<br>FY) | (73)                |

### Median Length of Stay in Foster Care

The data element, “Median length of stay in foster care” is the length of stay in foster care for which half of the children have been in care more time, and half of the children less time, on the last day of the Federal fiscal year. Again, this is based only on those children in care on September 30<sup>th</sup> of the year.

| VIII. Length of Time to Achieve Permanency Goal            |                  |                                  |
|--|------------------|----------------------------------|
| II. POINT-IN-TIME<br>PERMANENCY PROFILE<br><i>State X</i>  | Federal FY 2005  |                                  |
|  | # of<br>Children | Median<br>months to<br>Discharge |
| <b>VIII. Length of Time to Achieve<br/>Permanency Goal</b> |                  |                                  |
| Reunification  | (74)             | (75)                             |
| Adoption   | (76)             | (77)                             |
| Guardianship   | (78)             | (79)                             |
| Other  | (80)             | (81)                             |
| Missing Discharge Reason (footnote 3,<br>page 16)          | (82)             | (83)                             |
| Total discharges (excluding those w/<br>problematic dates) | (84)             | ----                             |
| Dates are problematic (footnote 4, page<br>16)             | (85)             | N/A                              |

### Length of Time to Achieve Permanency Goal

The data element, “Length of time to achieve permanency goal,” reports the number of children discharged from foster care during the Federal fiscal year. The section consists of seven categories, which are:

- Reunification/Relative Placement
- Adoption
- Guardianship
- Other
- Missing Discharge Reason
- Total discharges (excluding those with problematic dates)
- Dates are problematic

For each discharge reason in this section the median months to discharge represents the length of time for which half of the children had been in care a shorter amount of time to achieve the permanency goal, and half had been in care longer.

### IX. Statewide Aggregate Data Used in Determining Substantial Conformity

| II. POINT-IN-TIME PERMANENCY PROFILE<br><i>State X</i>  | Federal FY 2005 |               |
|---|-----------------|---------------|
|   | # of Children   | % of Children |
| IX. Of all children who were reunified with their parents, caretakers, or other relatives at the time of discharge from foster care, what percentage was reunified in less than 12 months from the time of latest removal from home?<br>(4.1) | (86)            | (87)          |

#### **Statewide Aggregate Data Used in Determining Substantial Conformity**

This data element was the first of four Permanency Indicators used in the first round of CFSR. It was used in determining the State's substantial conformity with Permanency Outcome #1. The data indicates the number of children discharged from foster care during the Federal fiscal year that were either returned to the parents, caretakers, or other relatives within 12 months of entering care.

The percentage is derived by dividing the number of children discharged from foster care during the Federal fiscal year that were either returned to the parents or relatives within 12 months of entering care by the total number of children who were reunified with parents or primary caretakers during the fiscal year. The national standard for the first round of CFSR was at least 78% returned within 12 months.

**X. Statewide Aggregate Data Used in  
Determining Substantial Conformity**

| II. POINT-IN-TIME<br>PERMANENCY PROFILE<br><i>State X</i>   | Federal FY 2005  |                  |
|---|------------------|------------------|
|   | # of<br>Children | % of<br>Children |
| X. Of all children who exited care to a finalized adoption, what percentage exited care in less than 24 months from the time of the latest removal from home? (5.1) | (88)             | (89)             |

**Statewide Aggregate Data used in Determining Substantial Conformity**

This data element was the second of four Permanency Indicators used in the first round of CFSR. It represents the number of children discharged from foster care during the Federal fiscal year that exited care to a finalized adoption within 24 months of entering care. This data element was used in determining the State's substantial conformity with Permanency Outcome #1. The data element was the second of the four Permanency Indicators.

The percentage represents all children discharged from care during the fiscal year that exited care to finalized adoption within 24 months of entering care as a percentage of all children discharged to a finalized adoption. For the first round of the CFSR, the national standard was 36% or more of the children discharged to adoption having been adopted within 24 months.

### XI. Statewide Aggregate Data Used in Determining Substantial Conformity

| II. POINT-IN-TIME<br>PERMANENCY<br>PROFILE<br><i>State X</i>   | Federal FY 2005  |                  |
|--|------------------|------------------|
|  | # of<br>Children | % of<br>Children |
| XI. Of all children served who have been in foster care less than 12 months from the time of the latest removal from home, what percentage have had no more than two placement settings? (6.1) | (90)             | (91)             |

#### Statewide Aggregate Data used in Determining Substantial Conformity

This data element was the third of four Permanency Indicators used in the first round of CFSR. This data element was used in determining State's substantial conformity with Permanency Outcome #1. It shows the number of children who have been in foster care less than 12 months from date of latest removal from home and who have no more than two placement settings.

The percentage represents the proportion of children who have been in foster care less than 12 months from date of latest removal from home that have had no more than two placement settings. The percentage is derived by dividing the number of children who have been in foster care less than 12 months from date of latest removal and who have had no more than two placement settings by the total number of children in foster care less than 12 months. For the first round of the CFSR, the national standard was 89% or more having only one or two placement settings.

## XII. Statewide Aggregate Data Used in Determining Substantial Conformity

| II. POINT-IN-TIME<br>PERMANENCY PROFILE<br><i>State X</i>   | Federal FY 2005  |                  |
|---|------------------|------------------|
|   | # of<br>Children | % of<br>Children |
| <b>XII.</b> Of all children who entered care during the year, what percentage re-entered foster care within 12 months of a prior foster care episode? (4.2) | (92)             | (93)             |

### Statewide Aggregate Data used in Determining Substantial Conformity

This data element was the fourth of four Permanency Indicators used in the first round of CFSR. For this measure, the number of children who re-entered foster care during the Federal fiscal year within 12 months of a prior foster care episode is calculated from the set of children admitted during the fiscal year.

The percentage of children who entered care during the year is derived by dividing the number of children who re-entered foster care during the federal fiscal year within 12 months of discharge from a prior foster care episode by the total number of admissions during Federal fiscal year. For the first round of the CFSR, the national standard was no more than 6% re-entries.

I. Number of Children Entering Care  
for the First Time in Cohort Group

| III. PERMANENCY<br>PROFILE<br>FIRST-TIME ENTRY<br>COHORT GROUP<br><i>State X</i>   | Federal FY 2005  |                  |
|--|------------------|------------------|
|  | # of<br>Children | % of<br>Children |
| I. Number of children entering<br>care for the first time in cohort<br>group (% = 1 <sup>st</sup> time entry of all<br>entering within first 6 months) | (94)             | (95)             |

**Number of Children Entering Care for the First Time in Cohort Group**

The First-time Entry Cohort refers to a group of children who entered out-of-home care for the first time in their lives during a designated time period, in this case the first six months of the Federal fiscal year.

The percentage is derived by dividing the number of children who entered foster care for the first time within the first six months of the reporting period by the number of all children who entered care during the first six months of the Federal fiscal year.

## II. Most Recent Placement Types

| III. PERMANENCY PROFILE<br>FIRST-TIME ENTRY<br>COHORT GROUP<br><i>State X</i> | Federal FY 2005  |                  |
|---|------------------|------------------|
|   | # of<br>Children | % of<br>Children |
| <b>II. Most Recent Placement Types</b>  |                  |                  |
| Pre-Adoptive Homes  | (96)             | (97)             |
| Foster Family Homes (Relative)  | (98)             | (99)             |
| Foster Family Homes (Non-Relative)  | (100)            | (101)            |
| Group Homes   | (102)            | (103)            |
| Institutions  | (104)            | (105)            |
| Supervised Independent Living   | (106)            | (107)            |
| Runaway   | (108)            | (109)            |
| Trial Home Visit  | (110)            | (111)            |
| Missing Placement Information   | (112)            | (113)            |
| Not Applicable (Placement in subsequent yr)                                   | (114)            | (115)            |

### Most Recent Placement Types

The data element, “Most Recent Placement Type” represents the most recent placement types recorded for each child in the cohort group. There are ten categories used to gauge the number of children in specific placement types, which are:

- Pre-Adoptive Homes
- Foster family homes (Relative)
- Foster family homes (Non-relative)
- Group homes
- Institutions
- Supervised independent living
- Trial home visit
- Missing placement information
- Not applicable (Placement in subsequent year).

The categories used here and in subsequent sections are the same as those used in the Point-in-time Profile. The percentages for this section are derived by dividing the number of children in each placement type by the number of all children in the cohort group.

| III. Most Recent Permanency Goal   |                  |                  |
|--|------------------|------------------|
| III. PERMANENCY<br>PROFILE<br>FIRST-TIME ENTRY<br>COHORT GROUP<br><i>State X</i> | Federal FY 2005  |                  |
|  | # of<br>Children | % of<br>Children |
| III. Most Recent Permanency<br>Goal  |                  |                  |
| Reunification  | (116)            | (117)            |
| Live with Other Relatives  | (118)            | (119)            |
| Adoption   | (120)            | (121)            |
| Long-Term Foster Care  | (122)            | (123)            |
| Emancipation   | (124)            | (125)            |
| Guardianship   | (126)            | (127)            |
| Case Plan Goal Not Established   | (128)            | (129)            |
| Missing Goal Information   | (130)            | (131)            |

### **Most Recent Permanency Goal**

The data element, “Most Recent Permanency Goal,” describes the various placement types for all children in the cohort group. There are eight groupings, which include:

- Reunification
- Live with other relatives
- Adoption
- Long-term foster care
- Emancipation
- Guardianship
- Case plan goal not established
- Missing goal information.

The percentages for this section are derived by dividing the number of children in each Permanency goal group by the number of all children in the cohort group.

**IV. Number of Placement Settings  
in Current Episode**

| <b>III. PERMANENCY<br/>PROFILE<br/>FIRST-TIME ENTRY<br/>COHORT GROUP<br/><i>State X</i></b> | <b>Federal FY 2005</b>   |                          |
|---|--------------------------|--------------------------|
|   | <b># of<br/>Children</b> | <b>% of<br/>Children</b> |
| <b>IV. Number of Placement<br/>Settings in Current Episode</b>                              |                          |                          |
| One   | (132)                    | (133)                    |
| Two   | (134)                    | (135)                    |
| Three   | (136)                    | (137)                    |
| Four  | (138)                    | (139)                    |
| Five  | (140)                    | (141)                    |
| Six or more   | (142)                    | (143)                    |
| Missing placement settings  | (144)                    | (145)                    |

### **Number of Placement Settings in Current Episode**

The data element, “Number of Placement Settings in Current Episode,” describes the number of foster care placement settings in the current removal episode for all children in the first-time entry cohort, ranging from 1 to 6 or more and those with missing placement setting information.

The percentages for this section are derived by dividing the number of children in each group by the number of all children in the cohort group.

| V. Reason for Discharge   |                          |                          |
|---|--------------------------|--------------------------|
| <b>III. PERMANENCY<br/>PROFILE<br/>FIRST-TIME ENTRY<br/>COHORT GROUP<br/><i>State X</i></b> | <b>Federal FY 2005</b>   |                          |
|   | <b># of<br/>Children</b> | <b>% of<br/>Children</b> |
| <b>V. Reason for Discharge</b>  |                          |                          |
| Reunification/Relative Placement  | (146)                    | (147)                    |
| Adoption  | (148)                    | (149)                    |
| Guardianship  | (150)                    | (151)                    |
| Other   | (152)                    | (153)                    |
| Unknown (missing discharge reason or N/A)   | (154)                    | (155)                    |

### **Reason for Discharge**

The data element, “Reason for Discharge,” calculates the reasons for discharge for all children in the First-time entry cohort who were discharged from care during the reporting period. There are five groupings in this category, which are:

- Reunification/ Relative placement
- Adoption
- Guardianship
- Other
- Unknown (missing discharge information).

The percentages for this section are derived by dividing the number of children in each group by the number of all children in the cohort group whose date of discharge from foster care is before the end of the fiscal year.

## VI. Median Length of Stay in Foster Care

| III. PERMANENCY<br>PROFILE<br>FIRST-TIME ENTRY<br>COHORT GROUP<br><i>State X</i> | Federal FY 2005  |  |
|--|------------------|--|
|  |                  |  |
|  | Number of Months |  |
| VI. Median Length of Stay<br>in Foster Care                                      | (156)            |  |
|  |                  |  |

**Median Length of Stay in Foster Care**

The data element, “Median Length of Stay in Foster Care,” represents the length of stay in foster care in months for members of the cohort group for which half of the group have been in care more time and half of the group has been in care less time. For a detailed clarification of how this number is determined please see the “Quick Reference Guide to the Data Elements.”

## Overview of CFSR Round 2 Revisions

- Composites are now divided into broader component measures
- Method for making computations revised
  - Children in care < 8 days excluded from some computations
  - Time in care adjusted for time on trial home visit
- Computations introduce AFCARS elements not used in Round 1
  - TPR dates
  - Placement setting and placement dates
  - Greater reliance on child ID for computations on cohorts
  - Discharges to guardianship and emancipation

### **Overview of CFSR Round 2 Revisions**

The second round for the CFSR includes 4 Permanency Composites used to determine a States' substantial conformity with Permanency Outcome 1. The Permanency Composites include measures on timeliness of reunification, timeliness of adoptions, achieving permanency, and placement stability.

One of the key revisions in measures computed for the second round of CFSR is that each topical component is now associated with a number different measures which serve to broaden the scope or universe of children for whom the measure applies. For example, while CFSR Round 1 measures for placement stability focused exclusively on children in foster care for less than 12 months, the revised measure now includes separate computations for children in care for different lengths of time. All measures associated with a given Permanency Composite are averaged to generate a single score.

As noted in the discussion on CFSR Round 1 measures, revisions have also been made with respect to how specific measures are computed. For example, the universe of children for whom timeliness of reunification is reviewed now excludes children in foster care less than 8 days. Other substantive changes include adjustments for computed time in care if the child was previously on a trial home visit.

Each of the Permanency Composites, except Composite 4 on placement stability, is comprised of a set of Components, which include a number of related measures. A weighted average of these Components is then taken to derive a score for the given Composite. The organization of measures within Components and within Composites is presented in the table below.

|  |
|--|
| <b>Permanency Composite 1: Timeliness and Permanency of Reunification</b>  |
| <i>Component A: Timeliness of Reunification</i>  |
| Measure (C1) - a1) Reunification exits in less than 12 months:   |
| Measure (C1) - a2) Median stay in months - reunification:  |
| Measure (C1) - a3) Percent of entry cohort who reunify in < 12 months:   |
| <i>Component B: Permanency of Reunification</i>  |
| Measure (C1) - b1) Percent of exits who re-enter in less than 12 months:   |
|  |
| <b>Permanency Composite 2: Timeliness of Adoptions</b>   |
| <i>Component A: Timeliness of Adoptions of Children Discharged From Foster Care.</i>   |
| Measure (C2) - a1: % of adoption exits occurring in less than 24 months:   |
| Measure (C2) - a2: Median length of stay to adoption in months:  |
| <i>Component B: Adoption for Children Meeting ASFA Time-In-Care Requirements.</i>  |
| Measure (C2) - b1: % in care for 17 or more months (on day 1 of FY) who were adopted by the end of the FY):                                  |
| Measure (C2) - b2: % in care for 17 or more months (on day 1 of FY) who achieved legal freedom within 6 months of start of FY:               |
| <i>Component C: Adoption of Children Who Are Legally Free for Adoption.</i>  |
| Measure (C2) - c1: % of legally free children adopted in less than 12 months   |
|  |
| <b>Permanency Composite 3: Achieving Permanency for Children in Foster Care</b>  |
| <i>Component A: Achieving permanency for Children in Care for Extended Periods of Time.</i>  |
| Measure (C3) - a1: Percent of exiting TPR children who exited to a permanent home.   |
| Measure (C3) - a2: Percent of children in foster care for 24 + months (on day 1 of FY) who exited to permanent homes in less than 12 months. |
| <i>Component B: Children Emancipated Who Were in Foster Care for Extended Periods Of Time.</i>   |
| Measure (C3) - b1: Children Emancipated Who Were in Care for Extended periods of Time.   |
|  |
| <b>Permanency Composite 4: Placement Stability (no components)</b>   |
| Measure C4 - 1) Two or fewer placement settings if in foster care less than 12 months.   |
| Measure C4 - 2) Two or fewer placement settings for children in care for 12 to 24 months.  |
| Measure C4 - 3) Two or fewer placement settings for children in care for 24+ months.   |

### CFSR Permanency Composite 1: Timeliness and Permanency of Reunification

| IX. Permanency Composite 1: Timeliness and Permanency of Reunification  | Federal FY 2005 |               |
|---|-----------------|---------------|
|   | # of Children   | % of Children |
| <b>Component A: Timeliness of Reunification</b>   |                 |               |
| <b>Measure (C1) - a1: Exits to reunification in less than 12 months:</b> Of all children discharged from foster care to reunification in the year shown, and who had been in foster care for 8 days or longer, what percent was reunified in less than 12 months from the date of the most recent entry into foster care? (Includes trial home visit adjustment)                    | (157)           | (158)         |
| <b>Measure (C1) - a2: Exits to reunification, median stay:</b> Of all children discharged from foster care (FC) to reunification in the year shown, and who had been in care for 8 days or longer, what was the median length of stay(in months) from the date of the most recent entry into FC until the date of reunification? (This includes trial home visit adjustment)        | (159)           | (160)         |
| <b>Measure (C1) - a3: Entry cohort reunification in &lt; 12 months:</b> Of all children entering foster care (FC) in the second 6 months of the year prior to the year shown, and who remained in FC for 8 days or longer, what percent was discharged from FC to reunification in less than 12 months from the date of first entry into FC? (Includes trial home visit adjustment) | (161)           | (162)         |
| <b>Component B: Permanency of Reunification</b>   |                 |               |
| <b>Measure (C1) - b1: Re-entries to foster care in less than 12 months:</b> Of all children discharged from foster care (FC) to reunification in the year prior to the one shown, what percent re-entered FC in less than 12 months from the date of discharge?   | (163)           | (164)         |

### **CFSR Permanency Composite 1: Timeliness and Permanency of Reunification**

Timeliness and Permanency in Reunification is the first of four Permanency Composites used in the second round of CFSR. The composite holds three measures concerning the timeliness of reunifications (Component A) and a single measure concerning foster care re-entry rates for children who were reunified (Component B).

#### **Component A - Timeliness of Reunification**

*Measure A1* describes the percentage of children discharged to reunification during the reporting year that were discharged to reunification within 12 months.

*Measure A2* summarizes the median length of time in foster care for children discharged to reunification during the reporting year.

*Measure A3* provides the percentage of children who entered care in the last 6 months of the previous reporting year that were reunified within 12 months.

#### **Component B - Permanency of Reunification**

*Measure B1* provides the percentage of children who were reunified in the previous reporting year that did not reenter foster care in less than 12 months.

### CFSR Permanency Composite 2: Timeliness of Adoptions

| X. Permanency Composite 2: Timeliness of Adoptions  | Federal FY 2005 |               |
|---|-----------------|---------------|
|   | # of Children   | % of Children |
| <b>Component A: Timeliness of Adoptions of Children Discharged From Foster Care.</b>  |                 |               |
| <b>Measure (C2) - a1: Exits to adoption in less than 24 months:</b> Of all children who were discharged from foster care to a finalized adoption in the year shown, what percent was discharged in less than 24 months from the date of the most recent entry into foster care?   | (165)           | (166)         |
| <b>Measure (C2) - a2: Exits to adoption, median length of stay:</b> Of all children who were discharged from foster care (FC) to a finalized adoption in the year shown, what was the median length of stay in FC (in months) from the date of the most recent entry into FC to the date of discharge?  | (167)           | (168)         |
| <b>Component B: Progress Toward Adoption for Children Who Meet ASFA Time-In-Care Requirements.</b> There are two individual measures. See below.  |                 |               |
| <b>Measure (C2) - b1: Children in care 17+ months, adopted by the end of the year:</b> Of all children in foster care (FC) on the first day of the year shown, and who were in FC for 17 continuous months or longer, what percent was discharged from foster care to a finalized adoption before the end of the year shown?  | (169)           | (170)         |
| <b>Measure (C2) - b2: Children in care 17+ months achieving legal freedom within 6 months:</b> Of all children in Foster Care (FC) on the first day of the year shown, and who were in FC for 17 continuous months or longer, what percent became legally free for adoption (i.e., a Termination of Parental Rights was granted for each living parent) in less than 6 months from the beginning of the year shown? | (171)           | (172)         |
| <b>Component C: Progress Toward Adoption of Children Who Are Legally Free for Adoption.</b> There is one measure for this component. See below.   |                 |               |
| <b>Measure (C2) - c1: Legally free children adopted in less than 12 months:</b> Of all children who became legally free for adoption in the prior fiscal year, what percent was discharged from foster care to a finalized adoption in less than 12 months?   | (173)           | (174)         |

### CFSR Permanency Composite 2: Timeliness of Adoptions

Timeliness of Adoptions is the second of four Permanency Composites used in the second round of CFSR. The composite holds two measures concerning the timeliness of adoptions (Component A), two measures concerning progress towards adoption for children meeting ASFA time-in-care requirements (Component B), and one measure on progress towards adoption for children legally free for adoption (Component C)

#### **Component A - Timeliness of Adoptions**

*Measure A1* describes the percentage of children discharged to adoption during the reporting year that were discharged to adoption within 24 months.

*Measure A2* summarizes the median length of time in foster care for children discharged to adoption during the reporting year.

#### **Component B - Progress on adoption for children meeting ASFA requirements**

*Measure B1* provides the percentage of children who had been in care for > 17 months on the 1<sup>st</sup> day of the reporting period that were adopted by the end of the reporting period.

*Measure B2* provides the percentage of children who had been in care for > 17 months on the 1<sup>st</sup> day of the reporting period that were legally free for adoption in 6 months.

#### **Component C - Progress on adoption for children legally free for adoption**

*Measure C1* describes the percentage of children who became legally free for adoption in the prior fiscal year that were discharged to adoption within 12 months.

**CFSR Permanency Composite 3:  
Achieving Permanency for Children in Foster Care**

| XI. Permanency Composite 3: Achieving Permanency for Children in Foster Care   | Federal FY 2005 |               |
|--|-----------------|---------------|
|  | # of Children   | % of Children |
| <b>Component A: Achieving permanency for Children in Foster Care for Extended Periods of Time.</b> This component has two measures.  |                 |               |
| <b>Measure (C3) - a1: Exits to permanency for children with TPR:</b> Of all children who were discharged from foster care in the year shown, and who were legally free for adoption (i.e., there was a Termination of Parental Rights for each living parent), what percent was discharged to a permanent home prior to their 18th birthday? A permanent home is defined as having a discharge reason of adoption, guardianship, or reunification (including living with relative) | (175)           | (176)         |
| <b>Measure (C3) - a2: Exits to permanency prior to 18th birthday for children in care for 24 + months.</b> Of all children in foster care for 24 months or longer on the first day of the year shown, what percent was discharged to a permanent home prior to their 18th birthday? A permanent home is defined as having a discharge reason of adoption, guardianship, or reunification (including living with relative).   | (177)           | (178)         |
| <b>Component B: Growing up in foster care.</b> This component has one measure.   |                 |               |
| <b>Measure (C3) - b1: Children Emancipated Who Were in Foster Care for 3 Years or More.</b> In the year shown, of all children who exited foster care with a discharge reason of emancipation prior to their 18th birthday, or who reached their 18th birthday while in foster care, what percent was in foster care for three years or longer?  | (179)           | (180)         |

**CFSR Permanency Composite 3: Achieving Permanency for Children in Foster Care**

Achieving Permanency for Children in Foster Care is the third of four Permanency Composites used in the second round of CFSR. The composite holds two measures concerning permanency for children in foster care for extended periods of time (Component A), and one measure summarizing length of time in care for children emancipated from care (Component B).

**Component A - Permanency for children in care for extended periods of time**

*Measure A1* describes the percentage of children who were discharged from care and legally free for adoption that exited to permanency before their 18<sup>th</sup> birthday.

*Measure A2* summarizes the percentage of children in foster care for > 24 months at the start of the reporting year that were discharged to permanency in < 12 months and prior to their 18<sup>th</sup> birthday.

**Component B - Emancipated children in care for extended periods of time**

*Measure B1* provides the percentage of children who were emancipated from foster care or reached their 18<sup>th</sup> birthday that were in foster care for < 3 years.

### CFSR Permanency Composite 4: Placement Stability

| XII. Permanency Composite 4: Placement Stability  | Federal FY 2005 |               |
|---|-----------------|---------------|
|   | # of Children   | % of Children |
| <b>Measure C4 - 1) Two or fewer placement settings for children in care for less than 12 months.</b> Of all children in foster care (FC) during the year shown, and who were in FC for at least 8 days but less than 12 months, what percent had two or fewer placement settings? | (181)           | (182)         |
| <b>Measure C4 - 2) Two or fewer placement settings for children in care for 12 to 24 months.</b> Of all children in foster care (FC) during the year shown, and who were in FC for at least 12 months but less than 24 months, what percent had two or fewer placement settings?  | (183)           | (184)         |
| <b>Measure C4 - 3) Two or fewer placement settings for children in care for 24+ months.</b> Of all children in foster care (FC) during the year shown, and who were in FC for at least 24 months, what percent had two or fewer placement settings?                               | (185)           | (186)         |

#### **CFSR Permanency Composite 4: Placement Stability**

Placement Stability is the fourth of four Permanency Composites used in the second round of CFSR. The composite holds three measures concerning placement stability and none are associated with a specific component.

**Measure 1** provides the percentage of children who were in care for 8 days to 12 months that had no more than 2 placement settings.

**Measure 2** provides the percentage of children who were in care for 12 to 24 months that had no more than 2 placement settings.

**Measure 3** provides the percentage of children who were in care for > 24 months that had no more than 2 placement settings.